

UNIVERSAL PROCESS INDICATOR SCALING METER ENGINEERING UNIT

°C

°F

RPM

Hz

A

V

pH

%

PSI

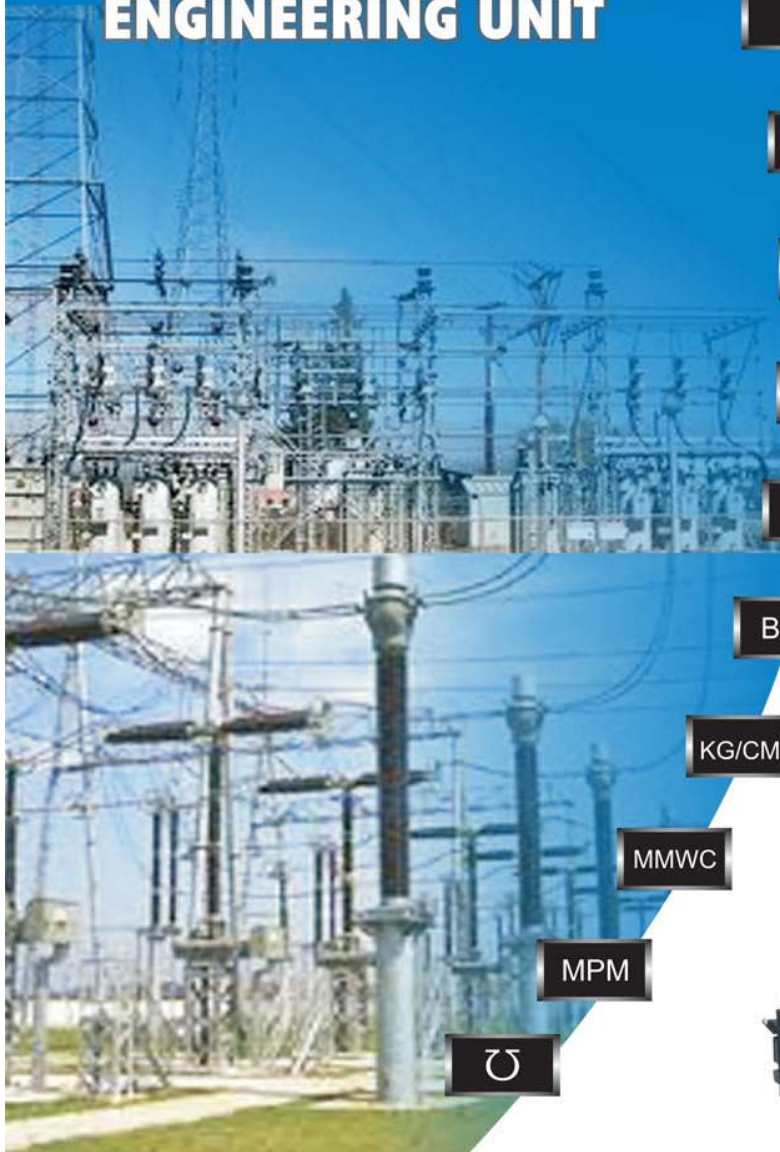
BAR

KG/CM²

MMWC

MPM

U





MODEL : 24EU-05 P

Microprocessor Based Engineering Unit with 24V DC Transmitter Supply, All inputs & Range Selectable by Front Panel Switches.

Input : Analogue 0~10V DC / 4~20mADC
(Scalable - 1999 to 9999 with selectable D.P.)
Display : 0.5" Height, 4 Digit
Mains : 180~264 V AC, 50 Hz.
Dimensions : 24 mm (H) x 48 mm (W) x 100 mm (D)

MODEL : EU-02

Microprocessor based Engineering Unit with Password protection, Range selectable from Front Panel Switches.

Input : 0~10V DC / 4~ 20mA DC (Jumper Setting)
(Scalable - 1999 to 9999 with selectable D.P.)
Display : 0.5" Height, 4 Digit
Mains : 7~24 V DC
Dimensions : 36 mm (H) x 72 mm (W) x 30 mm (D)
Front Bazel with Panel locking type.



MODEL : 48 EU-05 P

Microprocessor Based Engineering Unit with 24V DC Transmitter Supply, All inputs & Range Programmable from Front Panel Switches.

Input Sensor : T/C Type : J/K/R/S/T/E
RTD Type : PT-100/CU-53
Analogue : 0~10V DC / 4~20mADC
(Scalable - 1999 to 9999 with selectable D.P.)
Display : 0.5" Height, 4 Digit
Mains : 180~264 V AC, 50 Hz.
Dimensions : 48 mm (H) x 48 mm (W) x 100 mm (D)



MODEL : EU-08 P

Microprocessor Based Engineering Unit with 24V DC Transmitter Supply, All inputs & Range Programmable from Front Panel Switches.

Input Sensor : T/C Type : J/K/R/S/T/E
RTD Type : PT-100/CU-53
Analogue : 0~10V DC / 4~20mADC
(Scalable - 1999 to 9999 with selectable D.P.)
Display : 0.8" Height, 4 Digit
Mains : 180~264 V AC, 50 Hz.
Dimensions : 48 mm (H) x 96 mm (W) x 78 mm (D)



Microprocessor Based Engineering Unit with Hi & Lo Alarm setpoint with Relay O/P & Process Value (PV) Re-transmission 4~20 mA DC with 24V DC Transmitter Supply, All input & Range Programmable from Front Panel Switches.

Input Sensor : T/C - Type : J/K/R/S/T/E
 RTD - Type : PT-100/ CU-53
 Analogue : 0~10V DC / 4~20mADC
 (Scalable -1999 to 9999 with selectable D.P.)
 Display : 0.8" Height , 4 Digit
 Mains : 180~ 264 V AC, 50 Hz.
 Dimensions : 48 mm (H) x 96 mm (W) x 78 mm (D)

MODEL : EU-08 RTP



MODEL : EU-08 RTP-DV



Microprocessor Based Engineering Unit with Hi & Lo Alarm setpoint with Relay O/P & Process Value (PV) Re-transmission. 4~20mA DC with 24V DC Transmitter Supply, All inputs & Range Selectable from Front Panel Switches.

Input Sensor : T/C Type : J/K/R/S/T/E
 RTD Type : PT-100/ CU-53
 Analogue : 0~ 10V DC / 4~ 20mADC
 (Scalable - 1999 to 9999 with selectable D.P.)
 Display : 0.8" Height, 4 Digit
 Mains : 24 V DC
 Dimensions : 48 mm (H) x 96 mm (W) x 78 mm (D)

Microprocessor Based Engineering Unit with 24V DC Transmitter Supply, with Hi & Lo Alarm setpoint with Relay out-put with Rs.485 Modbus RTU Communication, All inputs & Range Programmable from Front Panel Switches.

Input Sensor : T/C Type : J/K/R/S/T/E
 RTD Type : PT-100/ CU-53
 Analogue : 0~10V DC / 4~20mADC
 (Scalable - 1999 to 9999 with selectable D.P.)
 Display : 0.5" Height, 4 Digit
 Mains : 180~ 264 V AC, 50 Hz.
 Dimensions : 48 mm (H) x 96 mm (W) x 78 mm (D)

MODEL : EU-08 TP-RS 485



MODEL : EU-08 P RS 485



Microprocessor Based Engineering Unit with RS485 modbus RTU Communication & 24V DC Transmitter Supply, All inputs & Range Programmable from Front Panel Switches.

Input Sensor : T/C Type : J/K/R/S/T/E
 RTD Type : PT-100/ CU-53
 Analogue : 0~ 10V DC / 4~ 20mADC
 (Scalable - 1999 to 9999 with selectable D.P.)
 Display : 0.8" Height, 4 Digit
 Mains : 180~ 264 V AC, 50 Hz.
 Dimensions : 48 mm (H) x 96 mm (W) x 78 mm (D)

MODEL : 96EU-08 RTP

Microprocessor based Engineering Unit with Hi & Lo Alarm setpoint with Relay O/P & Process Value (PV) Re-transmission. 4~20mA DC with 24V DC Transmitter Supply, All inputs & Range Programmable from Front Panel Switches.

Input Sensors : T/C Type : J/K/E/R/S/T
RTD Type : PT-100/CU-53
Analogue : 0~10V DC / 4~20mADC
(Scalable - 1999 to 9999 with selectable D.P.)
Display : 0.8" Height, 4 Digit
Mains : 180~264V AC, 50Hz



MODEL : 96EU-08 P

Microprocessor Based Engineering Unit with 24V DC Transmitter Supply, All inputs & Range Selectable from Front Panel Switches.

Input Sensor : T/C Type : J/K/R/S/T/E
RTD Type : PT-100/CU-53
Analogue : 0~10V DC / 4~20mADC
(Scalable - 1999 to 9999 with selectable D.P.)
Display : 0.8" Height, 4 Digit
Mains : 180~264 V AC, 50 Hz.
Dimensions : 96 mm (H) x 96 mm (W) x 78 mm (D)

